



Caledonian

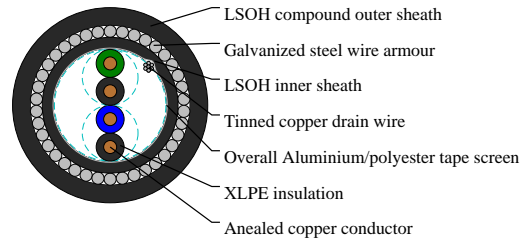
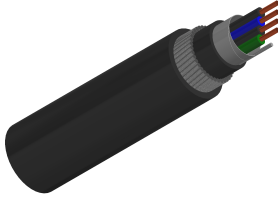
BS 5308 Instrumentation Cables

www.caledonian-cables.com

marketing@caledonian-cables.com

BS 5308 Part 1 / Type 2 (Armoured Cables) XLPE-OS-SWA-LSOH

RE-2X(St)HSAWAH 2P0.5



APPLICATIONS

The armoured LSOH versions (Part 1 Type 2) are generally used when the risk of mechanical damage is increased. The galvanised steel wire armour provides excellent protection. Generally used within industrial process manufacturing plants for communication, data and voice transmission signals and services, Also used for the interconnection of electrical equipment and instruments, the LSOH sheath can reduce toxic smoke and fume emission.

CABLE CONSTRUCTION

Conductor: Annealed or tinned copper, solid(Class 1) to BS6360

Insulation: XLPE (Cross Linked Polyethylene), or PE (optional)

Pairing: Two insulated conductors uniformly twisted together with a lay not exceeding 100mm

Binder tape: PETP transparent tape

Collective screen: Aluminium/polyester tape is applied over the laid up pairs metallic side down in contact with tinned copper drain wire, 0.5mm²

Inner Sheath: LSOH(Low Smoke Zero Halogen) sheath

Amour: Galvanized steel wire armour

Outer sheath: LSOH(Low Smoke Zero Halogen) sheath

Flame retardant to IEC60332-3-22. Halogen free to IEC60754-1. Low smoke emission to IEC61034-1-2

COLOUR CODE

Insulation colour code : See technical information

Sheath colour: Black or blue

PHYSICAL AND THERMAL PROPERTIES

Operating temperature:

-20°C up to + 90°C(fixed installation)

0°C to +50°C(during operation)

Minimum bending radius:

6 x overall diameter

Electrical Properties

Conductor Area Size: 0.5 mm²



Caledonian

BS 5308 Instrumentation Cables

www.caledonian-cables.com

marketing@caledonian-cables.com

Conductor Stranding(No.xmm):1x0.8

Conductor resistance(max):36.8 ohm/km

Insulation resistance(min):5 Gohm/km

Capacitance unbalance at 1kHz(pair to pair screen):250 pF/250m

Max. Mutual Capacitance @ 1kHz for Non OS or OS cables(except 1 pair and 2 pairs):75 pF/m

Max. Mutual Capacitance @ 1kHz IS/OS cables (include 1 pair and 2 pairs):115 pF/m

Max. L/R Ratio for adjacent cores(Inductance/Resistance):25 μ H/ohm

Test voltage :

Core to core:1000 V

Core to screen:1000V

Rated voltage max:300/500 V

DIMENSION AND PARAMETERS

No. of Pairs	Nominal Cross-sectional Area	No. and Dia. of Wires	Nominal Insulation Thickness	Nominal Inner Sheath Thickness	Diameter Over Inner Sheath	Nominal Armour Wire Diameter	Nominal Outer Sheath Thickness
	mm ²	no./mm	mm	mm	mm	mm	mm
2	0.5	1/0.8	0.5	0.8	6.1	0.9	1.3